



Without us !



With us :)



Environmental Impact using Technology

"9 out of 10 people worldwide breathe polluted air" - WHO

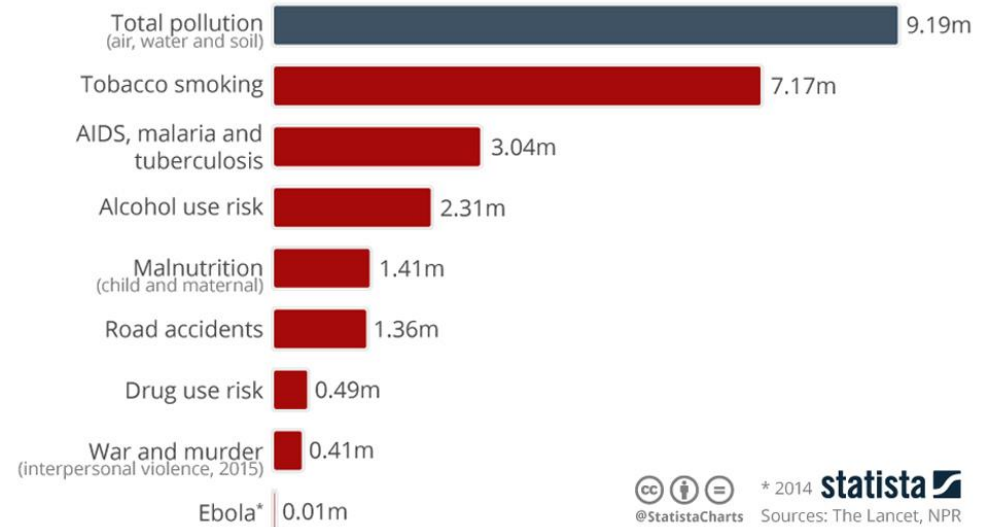
"14 out of world's 20 most polluted cities are in India" - WHO

"Meeting Air-Quality levels can add 4-years to Indians' lives" - THE UNIVERSITY OF CHICAGO

"Air Quality is 5th largest killer in India" - GBD REPORT

"India tops global pollution deaths (2.5Mn) of 9Mn a year." - THE LANCET COMMISSION

BECAUSE
Pollution Kills 3x As Many As
AIDS, TB & Malaria
Combined



Problem : Bottleneck on scalability

Present Environmental Monitoring Solutions are Expensive, Complicated and Human-intensive.
Market is fragmented. End-to-end Solutions are not available.



Our Solution

Simple | Cost-effective | Highly-scalable
Environmental Data Monitoring and Analytics



Environmental Data Acquisition



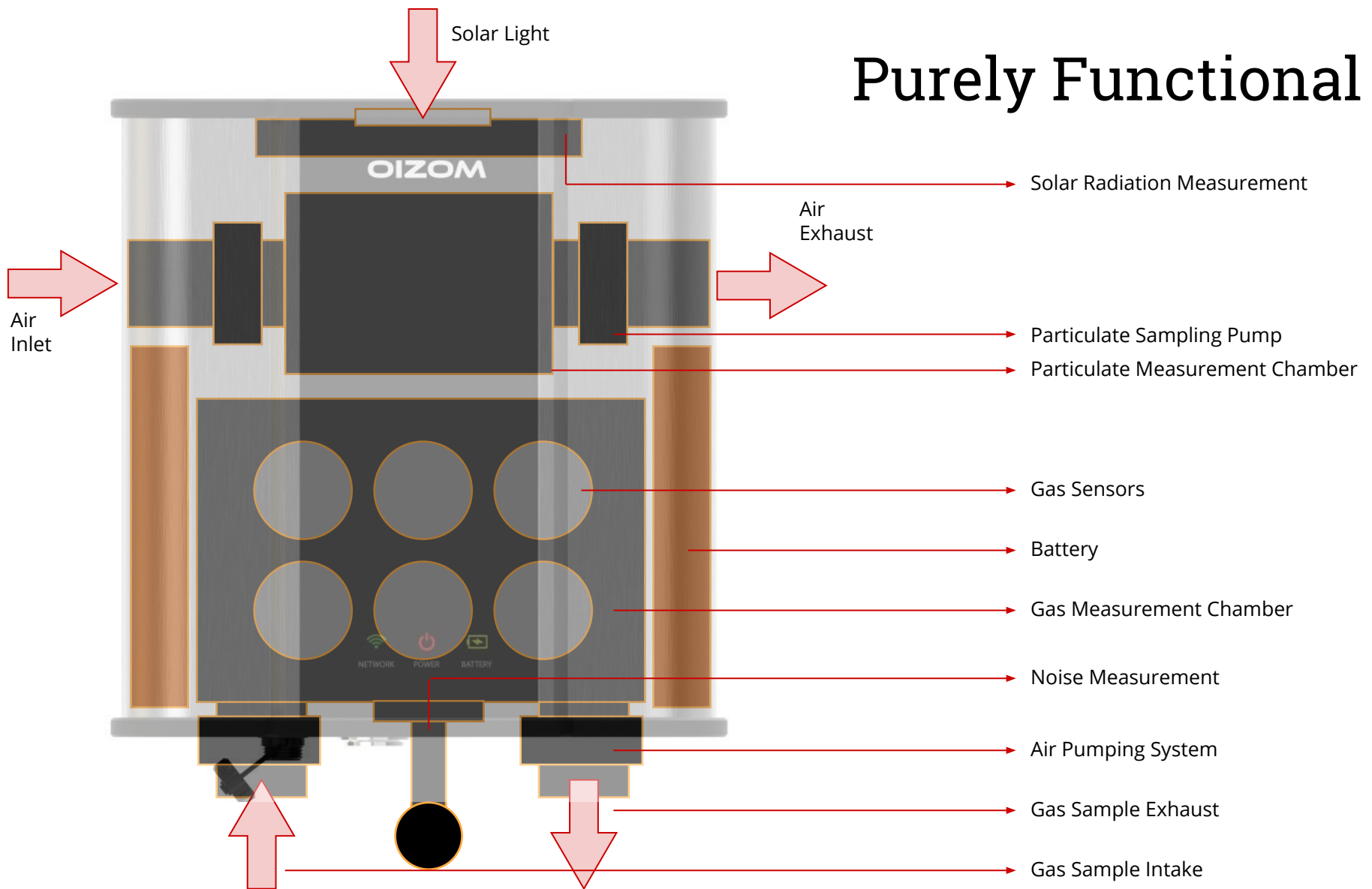
PATENT
PENDING



REGISTERED
DESIGN



Purely Functional





REAL TIME DATA TRANSFER



100% WEATHERPROOF (IP65)



THEFT RESISTANT



TAMPER PROOF



100% SOLAR POWERED



GSM / WIFI / LORA / LTE / Ethernet



UPTO 3 DAYS BATTERY BACKUP





PM10 : DUST PARTICLES

RANGE : 0 - 1000 UG/M3



SPM2.5 : MICRO-PARTICLES

RANGE : 0 - 1000 UG/M3



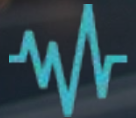
TOXIC GASES

CO2 + SO2 + NO + NO2 + CO + O3



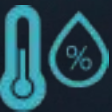
AMBIENT LIGHT

UV + LIGHT INTENSITY



NOISE MONITORING

RANGE : 0 - 140 DB



TEMPERATURE

HUMIDITY

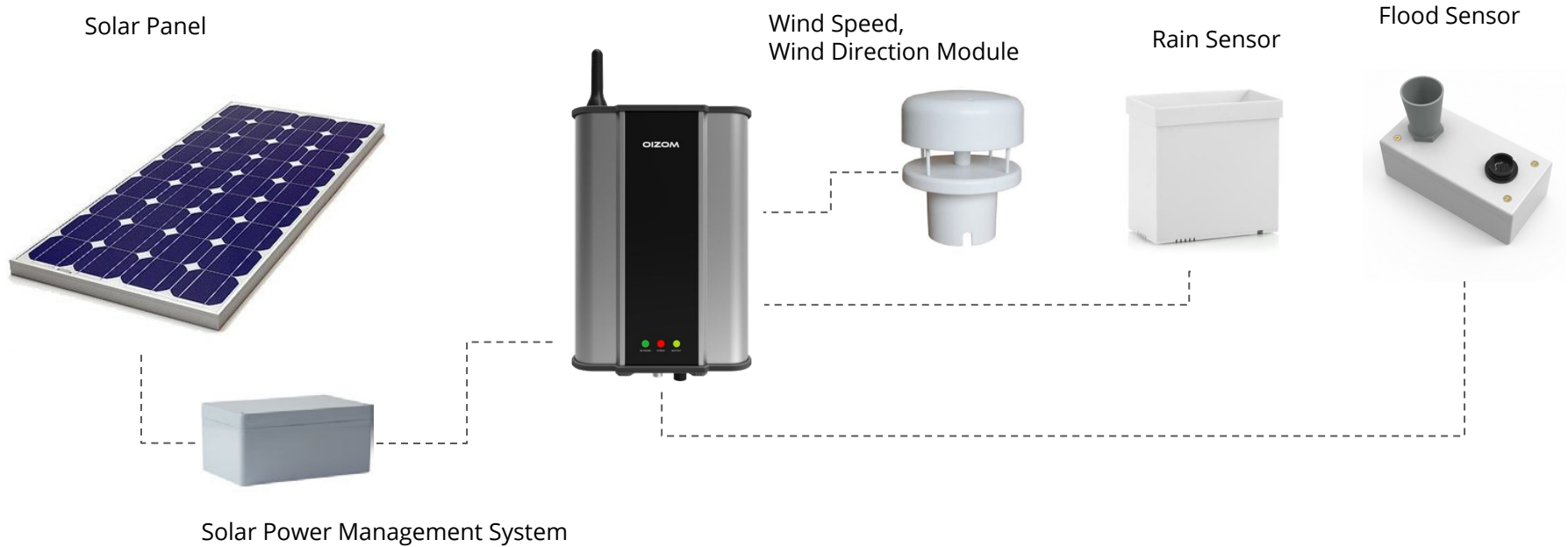
STATE OF ART POLLUTION MONITOR



Polludrone Variants

Parameters	Working Principle	Lite	Smart	Pro
PM1 - Ultrafine Particulate Matters 1μ	Laser Scattering			Y
PM2.5 - Suspended Particulate Matters 2.5μ		Y	Y	Y
PM10 - Particulate Matter 10μ		Y	Y	Y
T-H - Temperature Humidity	Resistive measurement	Y	Y	Y
N - Ambient Noise	Microphone Sensing	Y	Y	Y
Li - Light Intensity	Photovoltaic Operation	Y	Y	Y
UV - Ultraviolet Light		Y	Y	Y
Lv - Visible Light		Y	Y	Y
CO2 - Carbon Dioxide	Nondispersive Infrared Detector (NDIR)	Y	Y	Y
CO - Carbon Monoxide	Electrochemical Sensing	Y	Y	Y
NO -Nitric Oxide			Y	Y
NO2 -Nitrogen Dioxide			Y	Y
O3 - Ozone			Y	Y
SO2 - Sulphur Dioxide			Y	Y

External Modules



Parameters	Working Principle
R - Rainfall Monitoring	Electrical Feedback
W - Wind Speed + Direction	Ultrasonic Sensing
Flood	Ultrasonic Sensing



ODOURFUL GASES

NH₃ + H₂S + METHYL MERCAPTAN



TOTAL VOC

BTX + FORMALDEHYDE



TOXIC GASES

CO + SO₂



HYDROCARBON

CH₄



RADIATION

GAMMA RADIATION



AMBIENT LIGHT

UV + IR + LIGHT INTENSITY



TEMPERATURE

HUMIDITY



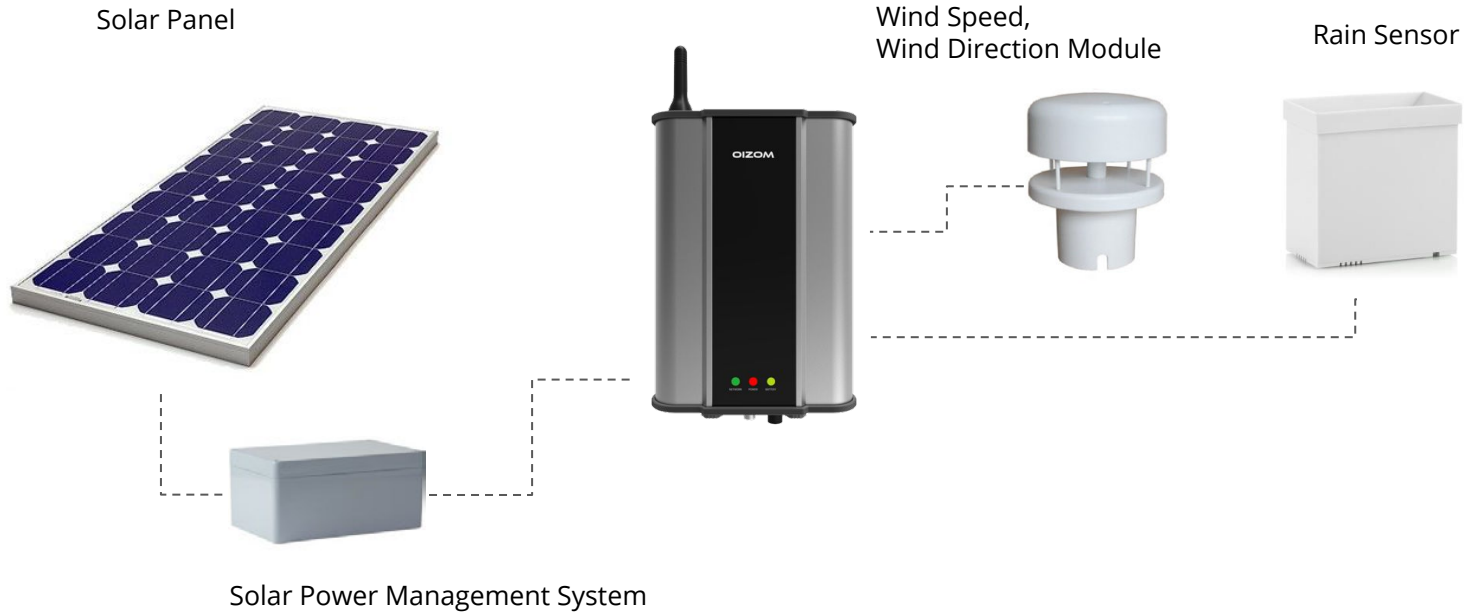
STATE OF ART

ODOUR MONITORING SOLUTION

Odosense Variants

Parameters	Working Principle	Lite	Smart	Pro
T-H - Temperature Humidity	Capacitive Sensing	Y	Y	Y
H2S - Hydrogen Sulfide	Electrochemical Sensing	Y	Y	Y
CO - Carbon Monoxide		Y	Y	Y
CH2O - Formaldehyde		Y	Y	Y
CH4 - Methane	NDIR	Y	Y	Y
NO -Nitric Oxide	Electrochemical Sensing		Y	Y
NO2 -Nitrogen Dioxide			Y	Y
SO2 - Sulphur Dioxide			Y	Y
NH3 - Ammonia			Y	Y
TVOC - Total Volatile Organic Compounds	PID - Photoionization detection			Y

External Modules



Parameters	Working Principle
R - Rainfall Monitoring	Electrical Feedback
W - Wind Speed + Direction	Ultrasonic Sensing
Flood	Ultrasonic Sensing



ONLINE
WEATHER MONITORING SOLUTION



WIND SPEED
ULTRASONIC MONITORING



WIND DIRECTION
ULTRASONIC MONITORING



RAINFALL
REAL TIME RAINFALL IN INCH/CM

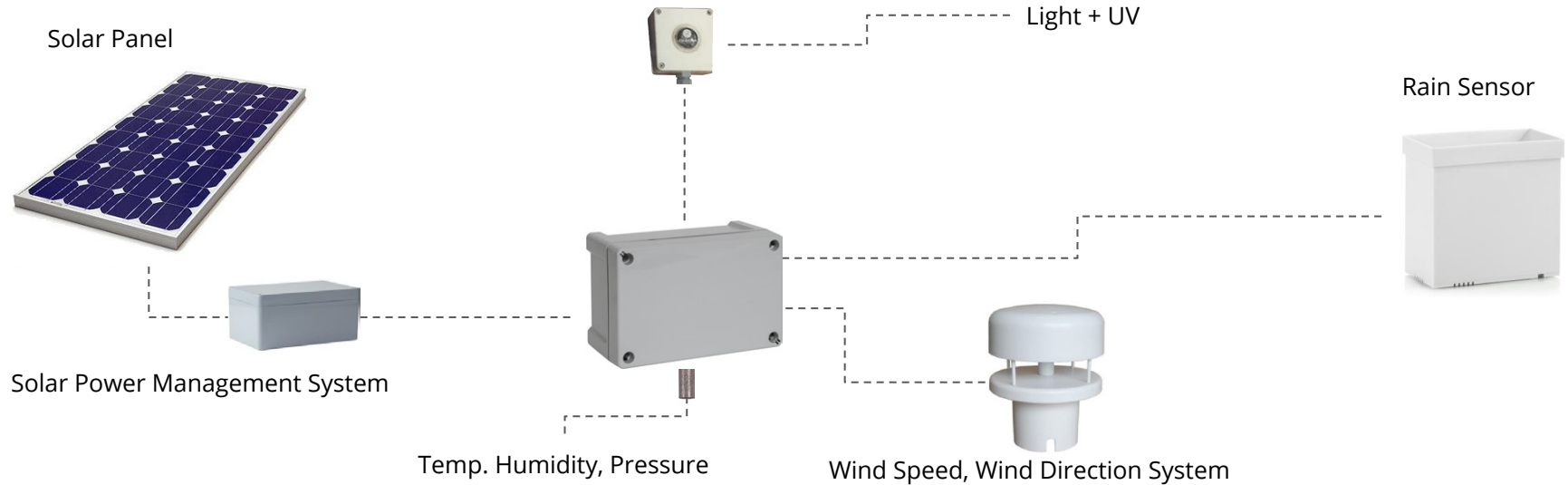


AMBIENT LIGHT
UV + IR + LIGHT INTENSITY



TEMPERATURE
HUMIDITY

Weathercom - AWS



Parameters	Working Principle
R - Rainfall Monitoring	Electrical Feedback
W - Wind Speed + Direction	Ultrasonic Sensing
Li - Light Intensity	Photovoltaic Operation
UV - Ultraviolet Light	
Lv - Visible Light	
Temperature, Humidity, Pressure	Resistive Measurement

Real-time Data Analytics



Custom Dashboard

Customised dashboard as per customer requirement and use-case.



Data Analytics

Realtime and Historical data analysis with 3 different approaches.



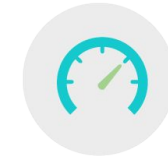
Smart Notifications

Email, SMS and Push-notifications when environmental condition crosses a threshold.



Automated Reports

System generated scheduled reports on daily, weekly, monthly basis (as per industry standards).



Environmental Widget

Environmental data-widget to be embedded in 3rd party web pages.



Pollution Heatmap

Street-by-street pollution heatmap of the city to analyze pollution at a granular level.

The image shows a computer monitor displaying the OIZOM Overview dashboard. The dashboard is divided into several sections:

- Header:** OIZOM logo and "OVERVIEW Map View" title.
- Left Sidebar:** Navigation menu with "Overview", "Dashboard", and "User" options.
- Map:** A central map showing a city area with blue location pins. A tooltip for a pin shows "AQI: 177". A color scale legend at the bottom right of the map ranges from 0 to 250.
- Right Sidebar:**
 - Weather: "28°C", "partly cloudy", "4° 9%".
 - Noise Level: "72 dB".
 - Table of Air Quality Parameters:

Parameter	Value
Lmax	122 dB
L10	53 dB
Leq	58 dB
L90	46 dB
Lmin	35 dB
- Bottom Section:** A row of seven parameter cards showing real-time data:
 - PM2.5: 596 μm^3
 - O₃: 6.79 $\mu\text{g}/\text{m}^3$
 - NO₂: 1.49 $\mu\text{g}/\text{m}^3$
 - CO: 18.74 $\mu\text{g}/\text{m}^3$
 - O₂: 0 $\mu\text{g}/\text{m}^3$
 - SO₂: 6.3 $\mu\text{g}/\text{m}^3$
 - PM2.5: 17.1 $\mu\text{g}/\text{m}^3$
 - PM10: 17.1 $\mu\text{g}/\text{m}^3$

```

1 # curl -X GET http://api.alz.com/user/5/devices
2
3 # curl -X GET http://api.alz.com/user/5/devices
4
5 Method : GET
6
7 Headers :
8   Accept-encoding: gzip,deflate;q=0.6,*/*;q=0.5
9   Accept-language: application/json
10
11 Response status code : 200
12
13 Response status : OK
14
15 Response body :
16 {
17   "deviceId": "02_MOLLORION_XXX",
18   "deviceId": "MOLLORION",
19   "label": "Pabian Cross",
20   "latitude": 23.860000,
21   "longitude": 77.587000,
22   "city": "Mombasa",
23   "status": "Inactive",
24   "country": "Tanzania",
25   "private": 1
26 }

```

The image shows a large digital display board at the entrance of the Kensville Golf Club. The board is divided into two panels. The left panel is for 'KENSVILLE GOLF LIVING' and shows an AQI of 23 (Good) with a green bar chart. The right panel is for '132 FEET ROAD' and shows an AQI of 106 (Moderate) with a yellow bar chart. Both panels include a 24-hour AQI forecast bar chart and a bottom row of icons for temperature, humidity, and wind speed.

Location	AQI	Category
Kensville Golf Living	23	Good
132 Feet Road	106	Moderate

Both panels also display a 24-hour AQI forecast bar chart and a bottom row of icons for temperature, humidity, and wind speed.

A digital display board titled "PALAVA ARE QUALITY" is shown. It displays the AQI value "92" in green, which falls into the "Fair (10-50)" category. The board also lists the "Medium (51-100)" and "Good (101-200)" categories. Below the AQI value, the word "Good" is displayed in green. The board is set against a background of a building and trees.

[illegible][illegible]

Pollution Heatmap

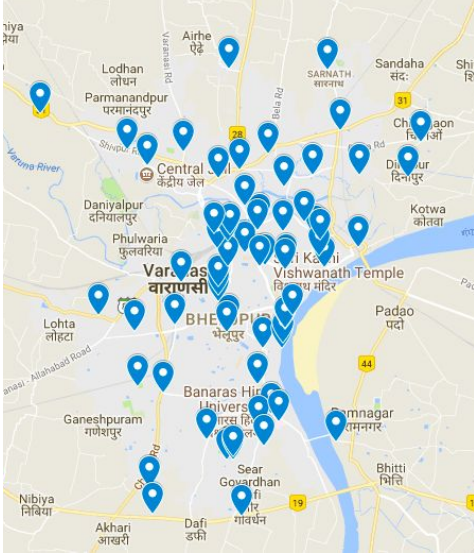


6 Smart city Projects + 3 in Pipeline

Integrations & Collaborations



End-to-End Solution



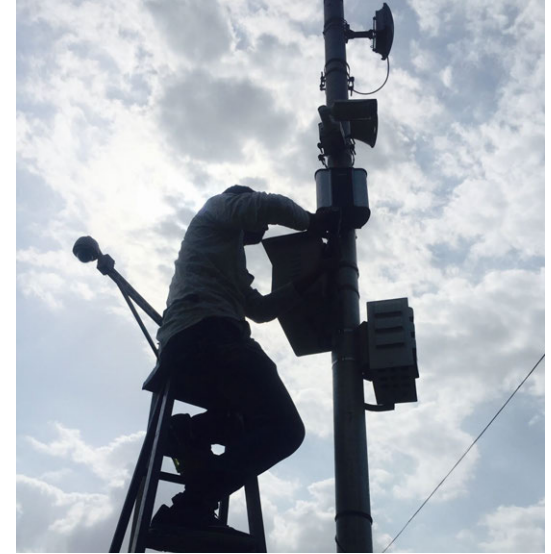
Planning & Mapping

Our team conduct site surveys and historical analysis of available environmental data to decide the locations of the various environmental solutions in the city.



Solution delivery & Calibration

We build the solution as the the requirement and deliver the lab-calibrated solutions to ensure data accuracy.



Solution Implementation and O&M

Our team helps the system integrator to implement (install) the solution as per the guidelines and further takes care of operation and maintenance activity for the entire tenure of the project.

Types of Calibration



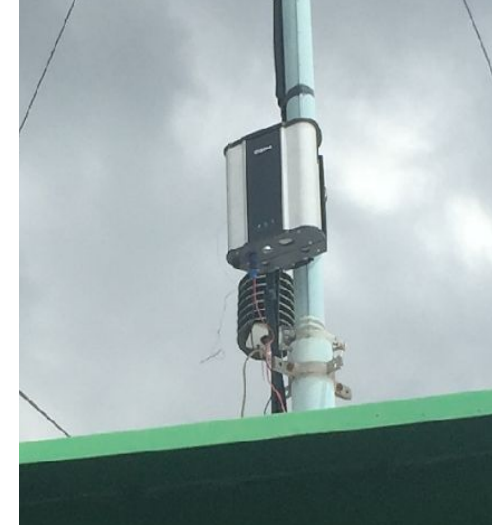
Factory Calibration

All the Polludrone sensors are calibrated by our sensor manufacturing partner before leaving the factory. All the sensors are kept under lab condition and calibrated with Pure (Zero) Air and with calibration gas (between 1-100 PPM depending on the sensor range).











Lab Calibration

Equipments are calibrated with pure air and calibration gases with high range concentration in clean and controlled lab environment. All the fine tuning is done in the configuration if required. The typical high range concentration ranges between 1-10 PPM and standard flow rate is kept at 0.5 L/min.



Spot Calibration

All the devices pass through calibration process once again after device assembly to ensure data quality. Devices are calibrated with pure air and calibration gases with high range concentration in clean and controlled lab environment. All the fine tuning is done in the configuration if required.

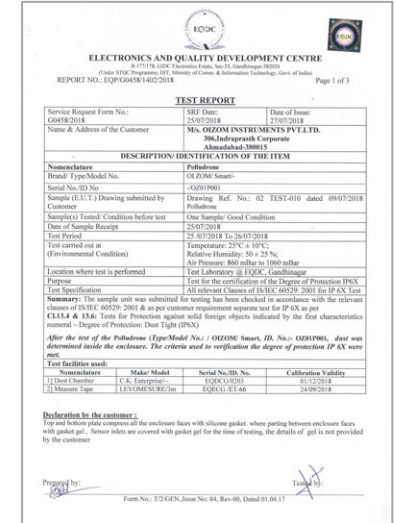
	Palava City	Kakinada Smart City	Alwar Highway	Kanjurmarg Landfill
				
Our Customer				
Application	Real Estate	Smartcity	Smart Highway	Odour Monitoring
Data Use Case	Data driven health-care actions for residents	Data driven city management and planning	Measure effectiveness of automated toll-booths	Odour treatment actions based on environmental data
Project Size	6 Pollution Monitors 2 Odour Monitors	14 Pollution monitors with Flood sensors	2 Pollution Monitors	5 Odour Monitoring sensors
Location	Mumbai	Kakinada	Rajasthan	Mumbai

200+ Solutions Live in Action



All the Required Certifications

- ISO-9001
- ISO-14001
- CE Safety
- FCC
- IP65
- ROHS
- SASO CoC



OIZOM

Oizom is an Environmental Solution Company. Started with a life-centric approach, Oizom builds data-driven solutions for natural resources like Air, Water, Soil, Energy etc.

By evolving with technology and through extensive R&D, Oizom aspires to set a class apart in its measurement accuracy and precision. Through an ecosystem of products, Oizom aims to make the environment understandable and predictable. With a dense network of Oizom Instruments and deep-learning data-science, Oizom strives to create a sustainable living. Oizom is currently focusing on ambient air-quality and will expand the solutions in other areas in future. Along with commercial activities, Oizom also participates in community initiatives through strategic partnerships. Oizom provides solution to Government bodies, NGOs, Public Sector Units, SMEs, etc to evolve as an eco friendly entity.



AIR



WATER



SOIL



Vision

Blend advanced technology with Natural resources to create Artificial Intelligence for the environment.



Mission

Create a dense network of environmental data acquisition points for data driven decision making and predictions.



Oizom Instruments Pvt. Ltd.
306 Indraprasth Corporate, Anand Nagar Road
Prahladnagar, Ahmedabad - India
+91-8866660025 | contact@oizom.com

Oizom - Savoie Technolac
House Boat 9, 12 Allée Du Lac De Garde,
Le Bourget du lac, France
+33 (0) 783426695 | hello@oizom.com

Without us !



With us :)

